

2014 JENSEN SERIES  
**92 ASD TRACTOR TUG**  
GREAT LAKES SHIPYARD







**JENSEN**

**Naval Architects &  
Marine Engineers**

*Beautiful Designs.*

*Efficient to Build.*

*Extraordinary to Operate.*

Jensen Maritime Consultants is a full-service naval architecture and marine engineering firm that delivers innovative, comprehensive and high-value engineering solutions to the marine community.





<i>AT-A-GLANCE.....</i>	<i>3</i>
<i>ART &amp; SCIENCE.....</i>	<i>5</i>
<i>ENGINEERING EXCELLENCE.....</i>	<i>6</i>
<i>PROVEN DESIGN.....</i>	<i>7</i>
<i>ELECTRONICS &amp; NAVIGATION.....</i>	<i>9</i>
<i>MACHINERY.....</i>	<i>11</i>
<i>DECK EQUIPMENT.....</i>	<i>12</i>
<i>FIRE-FIGHTING.....</i>	<i>13</i>
<i>SPECIFICATIONS.....</i>	<i>15</i>
<i>CONTACT US.....</i>	<i>18</i>



# **GREAT LAKES SHIPYARD**

**AN AFFILIATE OF THE GREAT LAKES GROUP**

Great Lakes Shipyard is a full-service shipyard for new vessel and barge construction, fabrication, maintenance, and repairs in a state-of-the-art facility that includes a 770-ton mobile Travelift and a 300-ton floating drydock.



Designed by Jensen Maritime Consultants. Proudly built by Great Lakes Shipyard.



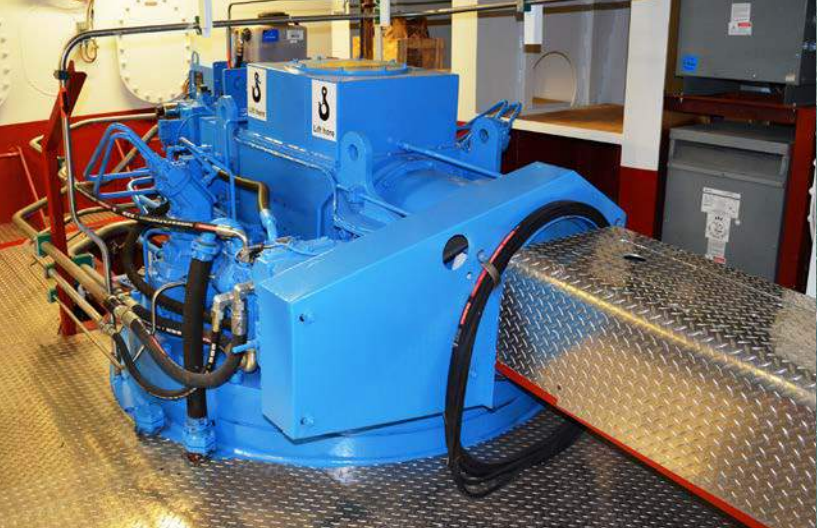
The 92' x 38' tugboat is built to perform harbor and offshore services including escort duties as well as ship assist and fire-fighting.







The U.S. Flagged vessel is Load Lined and classed by the American Bureau of Shipping (ABS) and includes world-class features.

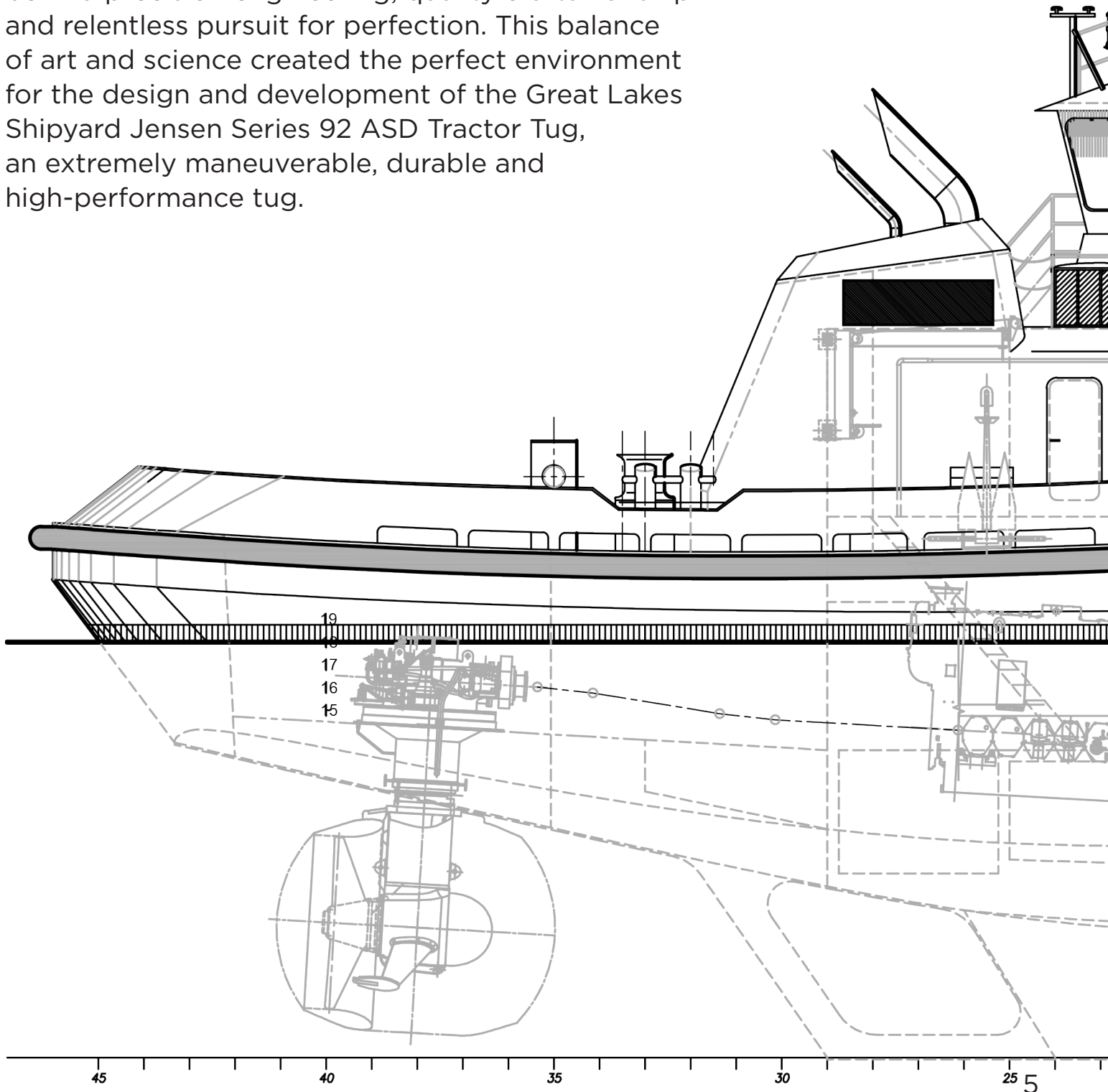


4,640 hp, 65-ton Bollard Pull, Double-skin Fuel Tanks, ABS Class \*A1, Towing Vessel, Escort Vessel, Fire-Fighting Vessel Class 1, \*AMS.



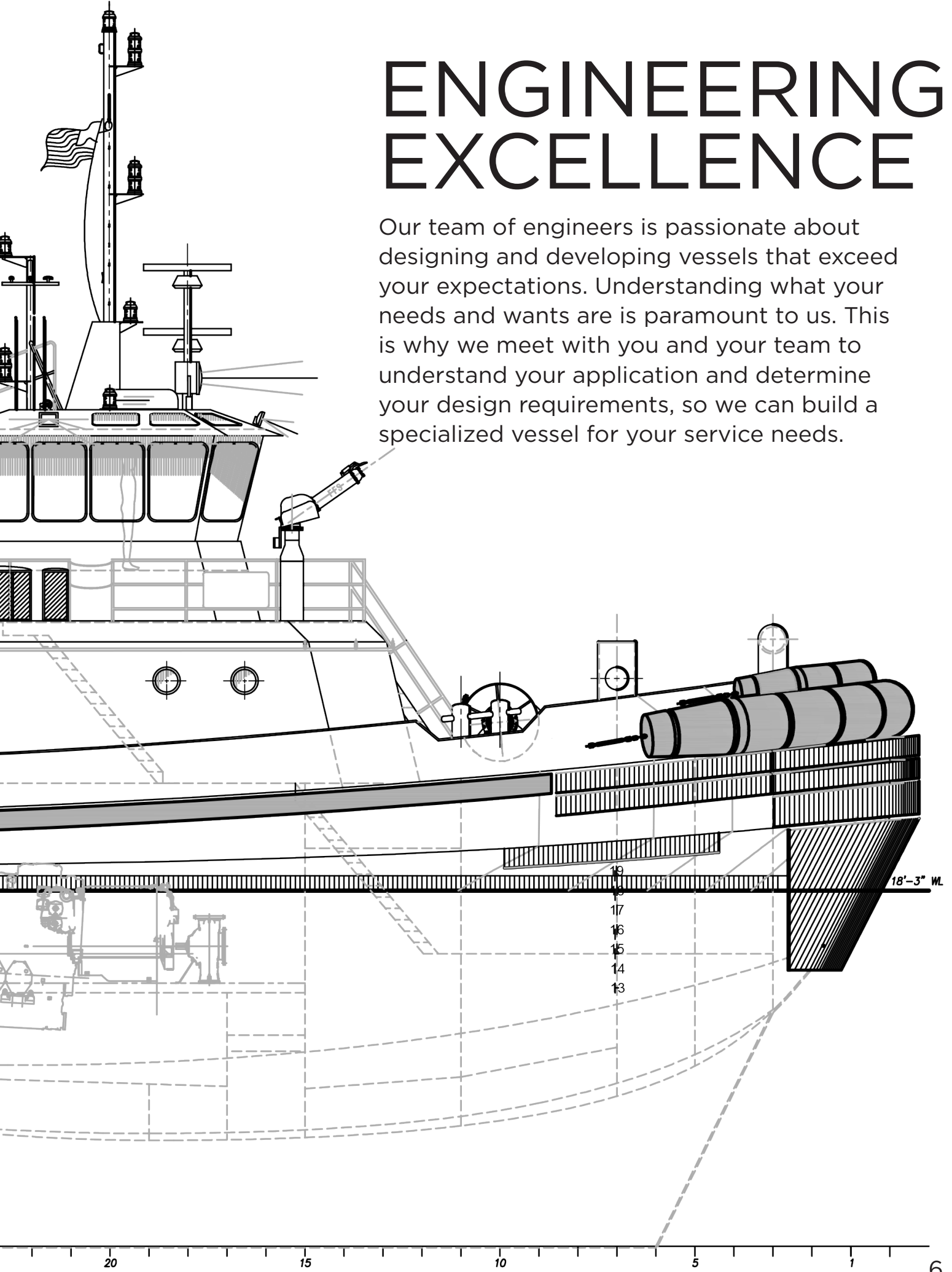
# ART & SCIENCE

At Great Lakes Shipyard, design, engineering and construction are vertically integrated to ensure that we deliver top-performing vessels in a timely and cost efficient manner, customized to your specifications. We offer the best of both worlds, the art and design of Jensen Maritime Consultants, Inc. and the science behind precision engineering, quality craftsmanship and relentless pursuit for perfection. This balance of art and science created the perfect environment for the design and development of the Great Lakes Shipyard Jensen Series 92 ASD Tractor Tug, an extremely maneuverable, durable and high-performance tug.



# ENGINEERING EXCELLENCE

Our team of engineers is passionate about designing and developing vessels that exceed your expectations. Understanding what your needs and wants are is paramount to us. This is why we meet with you and your team to understand your application and determine your design requirements, so we can build a specialized vessel for your service needs.





# PROVEN DESIGN

How did we create the world's finest tug? By building a tractor tug that is as agile and durable as it is powerful and technologically advanced. By benchmarking the world's best workboats and aiming even higher.

Every feature of the Great Lakes Shipyard Jensen Series 92 ASD Tractor Tug is thoughtfully designed to provide your crew with best-in-class performance and capabilities, with added confidence and maneuverability to meet ship assist or escort requirements.









# ADVANCED TECHNOLOGY

- Furuno FAR 2117 12 kW 96 NM Radar with 6'-6" Open Array
- Furuno 8062 6 kW 72 NM Radar with 4' Open Array
- Furuno SC-120 GPS Satellite Compass
- Two (2) Furuno FM8800S Class A Digital Selective Calling (DSC) Global Maritime Distress & Safety System (GMDSS) VHF Radios
- Furuno GP150D GPS Navigator
- Furuno FA150 AIS
- Satellite 406 EPIRB
- Two (2) SART Transponders
- Furuno FE-700 Echosounder
- Furuno PB150 Anemometer with RD33 Displays
- Navgard Bridge Navigation Watch Alarm System (BNWAS), per IMO Regulations
- Techsol Alarm and Monitoring System. Monitoring points include: Main Engines, Generators, Fire-Fighting Engine, Fire Detection System, Z-Drives, etc. Touchscreen Displays in Pilot House, Captain's Quarters and Machinery Space
- Techsol PC and Monitor in the Pilot House Featuring Third-party Software including a Chart Plotter Navigation
- Sperry Marine NAVPILOT 4000 Autopilot

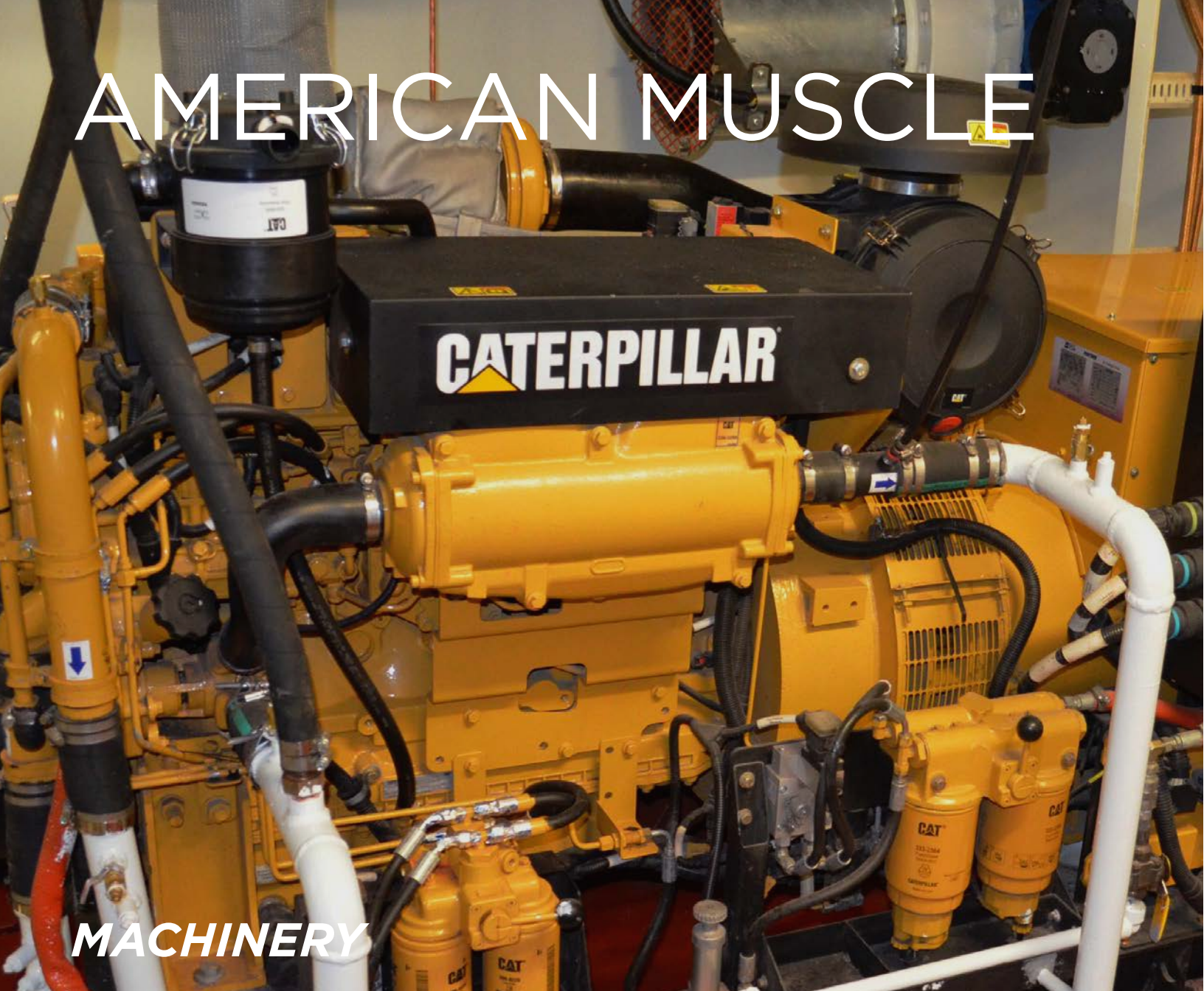




# ELECTRONICS & NAVIGATION



# AMERICAN MUSCLE



## ***MACHINERY***

### ***MAIN ENGINE***

- Two (2) Caterpillar C280-6 Propulsion Engines, Tier III EPA Emissions Certification
- 2,320 hp each at 900 RPM, 6-Cylinder
- Electronic Fuel Injection

### ***PROPULSION DRIVES***

- Rolls-Royce Model US 205
- 2,320 hp per unit at 900 RPM

### ***GENERATORS***

- Two (2) Caterpillar C6.6 150 kW Gensets
- One (1) Battery Start, One (1) Air Start
- 480 VAC, 3-phase, 60 Hz



# TOW BETTER, TOW STRONGER

## ***DECK EQUIPMENT***

### ***HAWSER WINCH***

- JonRie Dual Bow Winch, Model A220-1030
- Line Pull: 28,000 lbs @ 150 FPM
- Line Capacity: 450' of 7' Line
- Brake Capacity: Greater than 350,000 lbs

### ***CAPSTAN***

- JonRie Aft Capstan Model A421-201
- Line Pull: 15,000 pounds at 30 FPM
- Stall Line Pull: 30,000 pounds



# FIRE FIGHTER



## *FIRE PUMP*

- One (1) FFS SFP 250x350 XP Centrifugal Pump
- Driven by/Close-coupled to a Dedicated Caterpillar C-32 Diesel Engine at 1,800 RPM
- 12,000 GPM at 180 psi
- One (1) Foam Proportioner
- FFS Type IM/PI-100
- Variable Foam Proportioning, 0.5% to 3%
- Electrical Remote Fire-Fighting Engine Control and Display





## ***FIRE-FIGHTING MONITORS***

- Two (2) FFV-1 FFS Model FFS-1200/300 Monitors
- 1200 m<sup>3</sup>/h (5280 gpm) with Foam
- Throw Distance of 394'
- Elevation of +80/-20 Degrees
- Rotation of +/- 180°
- Control Panel for Two (2) Monitors
- Two (2) Joysticks and Switch for Fog-jet Functions in the Pilothouse



<b>LENGTH</b>	92'-0"
<b>BREADTH</b>	38'-0"
<b>DEPTH</b>	16'-9"
<b>DRAFT (LOADED)</b>	18'-3"
<b>AIR DRAFT</b>	44' -9" Mast Up, 33' -9" Mast Down
<b>LIGHTSHIP</b>	455 Long Tons
<b>SPEED</b>	12.7 kts Cruise, 10 kts Maximum
<b>DIESEL FUEL CAPACITY</b>	38,325 gal
<b>WATER BALLAST CAPACITY</b>	6,340 gal
<b>POTABLE WATER STORAGE</b>	2,500 gal
<b>LUBE OIL STORAGE</b>	500 gal
<b>HYDRAULIC OIL - STORAGE</b>	500 gal
<b>WASTE OIL CAPACITY</b>	500 gal
<b>SEWAGE HOLDING TANK</b>	3,100 gal
<b>ENGINES</b>	Caterpillar C280-6 CS Rating: 2,320 hp @ 900 RPM, Tier III (2)
<b>HORSEPOWER</b>	4,640 hp
<b>Z-DRIVE</b>	Rolls Royce, US 205 FP, NiAl-Bronze Prop, 7'-6" Diameter (2)
<b>BOLLARD PULL</b>	121,000 lbs, Rolls-Royce, ABS verified
<b>FIRE-FIGHTING</b>	FFV1, 2 x 5,200 GPM With 1,500 gal Foam Storage Monitors Capacity
<b>ACCOMMODATIONS</b>	6 Berths
<b>TONNAGE</b>	<500 GT ITC, <100 GT US Regulatory



# SPECIFICATIONS





EMH 10 ton

# BUILT TO LAST





---

**CONTACT US TO SCHEDULE A DESIGN CONSULTATION APPOINTMENT  
AND QUOTE YOUR JENSEN SERIES 92 ASD TRACTOR TUG AS YOU NEED IT.**

---

If you can dream it, we can build it. Together, we bring your vision to life by following a comprehensive process that ensures your fabrication project is customized to fit your needs and is built to exceed your expectations.

**DISCOVER**



Together, we gain an understanding of your challenge and reveal potential solutions.

**CUSTOMIZE**



Based on your vision, we customize the solution to achieve your goals and objectives.

**INNOVATE**



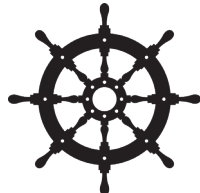
With our engineering and design teams, we develop an innovative plan to bring your vision to life.

**BUILD**



Our craftsmen construct, assemble and install your project.

**QUALITY ASSURANCE**



Ensuring flawless execution, our quality assurance teams evaluate your project.

**ROI OPTIMIZATION**



We meet as a team to assess the project and ensure your expectations are exceeded.

---

**VISIT US**

4500 Division Avenue  
Cleveland, Ohio 44102-2228

**CONTACT US**

P: 216-621-4854  
F: 216-621-7616  
sales@thegreatlakesgroup.com  
www.thegreatlakesgroup.com

---

**FOLLOW US**

-  facebook.com/GreatLakesGroup
  -  twitter.com/GreatLakesGroup
  -  linkedin.com/company/GreatLakesGroup
  -  instagram.com/GreatLakesGroup
  -  youtube.com/GreatLakesGroup
-



**GREAT LAKES SHIPYARD**  
AN AFFILIATE OF THE GREAT LAKES GROUP